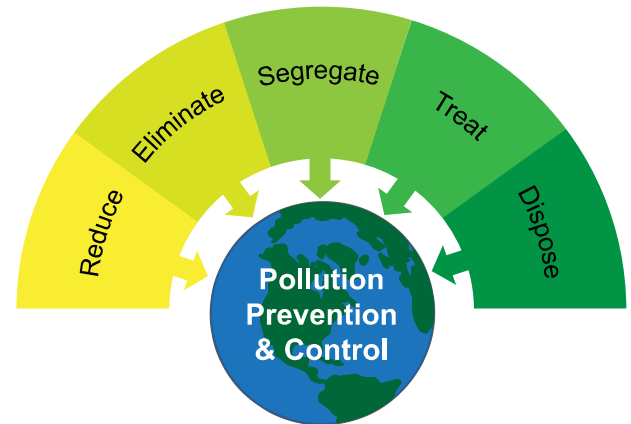
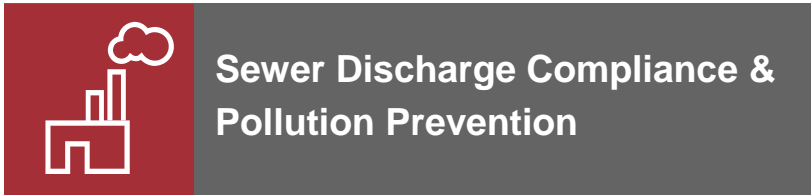


Emissions Reduction & Compliance



Discharges to Municipal Sewer Systems

Industries and businesses discharging to municipal sewer systems are required to meet local discharge By-laws. For example, organizations operating in the City of Toronto must meet the requirements of the City of Toronto By-Law No. 457-2000, to regulate the discharge of sewage and land drainage.

Industry sectors that meet specific criteria are required to develop a Pollution Prevention (P2) Plan. As with other requirements in the Use By-law, failure to comply can lead to enforcement action including fines and charges. According to Section 13(3) of the By-Law, a contravention of the pollution prevention planning requirements can result in a fine of up to \$5,000 a day for each day the offence continues.

For more information contact:
Rosanna DiLabio, M.Sc., P.Eng.
 tel: 1.855.PINCHIN (746-2446) x 1319
 email: rdilabio@pinchin.com
 website: www.pinchin.com

Go to pinchin.com for more information on our Emissions Reduction & Compliance Services.

Pollution Prevention Planning

Pollution Prevention is the use of processes, practices, materials, products or energy that avoid or minimize the creation of pollutants and waste, and reduce the overall risk to human health and the environment.

Pollution Prevention offers significant advantages over traditional environmental management techniques. The focus is on anticipating and preventing pollution, reducing the use of toxic chemicals and minimizing the generation of industrial wastes. Pollution prevention promotes continuous improvement through design, technical, operational and behavioural changes.

Pollution prevention offers the potential for significant cost savings through the reduction of wastes at the source. These savings can arise from reduced waste disposal costs, increased process efficiency, and reduced raw material usage. In addition to these conventional costs, organizations can also benefit from reductions in less obvious or hidden costs. Less obvious costs include regulatory costs, employee training, clean-up costs and corporate image. These costs are often overlooked, but they are real and they can be significant.

Pinchin's Wastewater and Pollution Prevention Services

Pinchin provides sampling and analysis services that will determine if sewer discharges are in compliance with by-laws and if not, develop and implement innovative pollution prevention plans, techniques and principles. Our personnel have provided expertise to many organizations to effectively reduce wastes, resulting in cost savings.

We apply a quality management philosophy to pollution prevention, in the belief that what gets measured, gets managed. As well Pinchin views pollution prevention as an integral part of an organization's overall environmental management system.

Pinchin's Pollution Prevention services include:

- ✓ Quantification and identification of source pollutants, including complete inventories
- ✓ Development and implementation of pollution prevention plans
- ✓ Identifying pollution prevention opportunities, including process modifications
- ✓ Development of environmental management programs
- ✓ Incorporation of pollution prevention in Environmental Management Systems
- ✓ Coaching/facilitating cross-functional teams in the pollution prevention process
- ✓ Provision of training programs and workshops

